

Name \_\_\_\_\_

Date \_\_\_\_\_

# Parts of Speech - Vocab Cards

**adjective** noun

**a word that describes a noun. Some common ones are "good," "hungry," "tired," and "big."**

In the sentence "It was an easy test," the word "easy" is an *adjective* because it describes the test.

good	hungry	weak
big	easy	tired
young	real	bad
		happy

Use this word in a sentence or give an example to show you understand its meaning:

Draw this vocab word or an example of it:

**adverb** noun

**a word that describes a verb, adjective, adverb, or whole sentence. They describe how or when or where we do things. Words like "tomorrow," "here," "there," "slowly," and "usually" are examples.**

In the sentence "The cat ate quickly," the word "quickly" is an *adverb*.

tomorrow	there
here	slowly
usually	

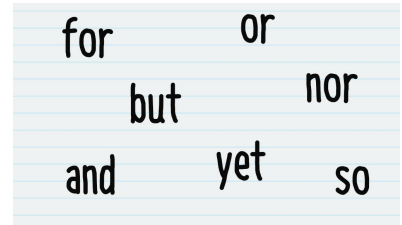
Use this word in a sentence or give an example to show you understand its meaning:

Draw this vocab word or an example of it:

**conjunction** noun

**a word that connects words, sentences, or parts of sentences.**

In the sentence "My favorite foods are pizza and broccoli," "and" is a *conjunction* that connects "pizza" and "broccoli."



Use this word in a sentence or give an example to show you understand its meaning:

Draw this vocab word or an example of it:

**interjection** noun

**a word or expression that shows strong feeling.**

"Oh no!" is an example of an *interjection*.



Use this word in a sentence or give an example to show you understand its meaning:

Draw this vocab word or an example of it:

**modify** verb

**to describe or limit the meaning of; qualify.**

"Noisy" is used to *modify* "car" in the phrase "a noisy car."

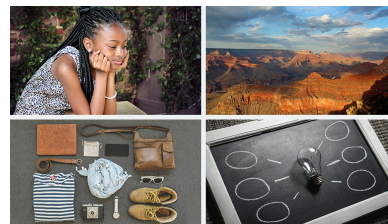
Use this word in a sentence or give an example to show you understand its meaning:

Draw this vocab word or an example of it:

**noun** noun

**a word that names a person, place, thing or idea.**

In the sentence "Jaida likes to read science books," there is more than one *noun*: "Jaida" and "books."



Use this word in a sentence or give an example to show you understand its meaning:

Draw this vocab word or an example of it:

**part of speech** noun

**one of the major categories into which words are often grouped, according to their function.**

An adjective is a *part of speech* that has a different function from a noun and a verb.

adjective		noun
	conjunction	
adverb		pronoun
	interjection	
preposition		verb

Use this word in a sentence or give an example to show you understand its meaning:

Draw this vocab word or an example of it:

**preposition** noun

**a word such as "to," "in," or "for" that comes before a noun. It describes the relationship between the noun and what comes before it. If we say "The cat is under the bed," we are telling the relationship between the cat and the bed with "under."**

In the sentence "They swam until sunset," the word "until" is a *preposition*.

	around	in
to		
	for	about
under		
	before	until

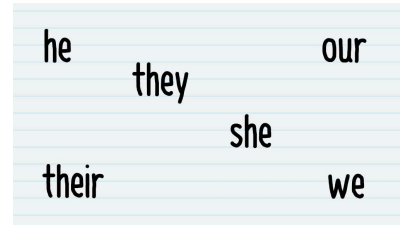
Use this word in a sentence or give an example to show you understand its meaning:

Draw this vocab word or an example of it:

**pronoun** noun

**a word that can take the place of a noun or noun phrase.**

In the sentence "He gave the cake to Olivia," the word "he" is a *pronoun*.



Use this word in a sentence or give an example to show you understand its meaning:

Draw this vocab word or an example of it:

**verb** noun

**a word that expresses an action or state of being.**

In the sentence "Freida runs on the beach," the *verb* is "runs."



Use this word in a sentence or give an example to show you understand its meaning:

Draw this vocab word or an example of it: